

Voice & Data Systems



Welcome to our complete portfolio of telecommunications and networking solutions. We provide cutting-edge infrastructure components that form the backbone of modern digital communications, from voice systems to advanced security hardware. Our solutions are designed for reliability, scalability, and seamless integration into your existing network architecture.

- **IP/Digital/Analog Voice Exchange**
- **Data Centers**
- **GPON/XGSPON Systems**
- **FTTH Networks**
- **Active Network Equipment**
- **Passive Network Equipment - Structured Cabling**
- **Industrial Telephone**
- **SOS Points**
- **IT Security Hardware**



IP/Digital/Analog Voice Exchange Systems



Modern Communication Backbone

Our voice exchange systems serve as the central hub for all communications, seamlessly integrating traditional analog voice with advanced digital and IP-based technologies. We offer flexible deployment options including on-premises, cloud-based, and hybrid solutions to meet diverse organizational needs while ensuring compatibility with existing infrastructure.

Key Features

- Unified communications across platforms
- Scalable from small offices to enterprise deployments
- 99.999% uptime reliability guarantee
- Advanced call routing and management





The Foundation of Digital Infrastructure

Design & Construction

We deliver turnkey data center solutions from initial design through construction and commissioning. Our facilities incorporate redundant power systems, advanced cooling, and optimized layouts to maximize efficiency and reliability.

Management & Monitoring

Our DCIM (Data Center Infrastructure Management) solutions provide real-time insights into performance metrics, energy usage, and equipment health, enabling proactive maintenance and optimization.

Colocation Services

For organizations seeking flexibility without capital investment, our colocation services offer secure rack space, power, cooling, and connectivity in our purpose-built facilities with 24/7 support and security.

Our data centers are designed to meet Tier III/IV standards with **99.999% uptime guarantees** and compliance with ISO 27001, SSAE 18, and regional regulatory requirements.



Next-Generation Optical Networks

Gigabit Passive Optical Network (GPON) and 10-Gigabit Symmetric Passive Optical Network (XGSPON) technologies form the foundation of high-speed fiber networks, delivering exceptional bandwidth and reliability.

GPON

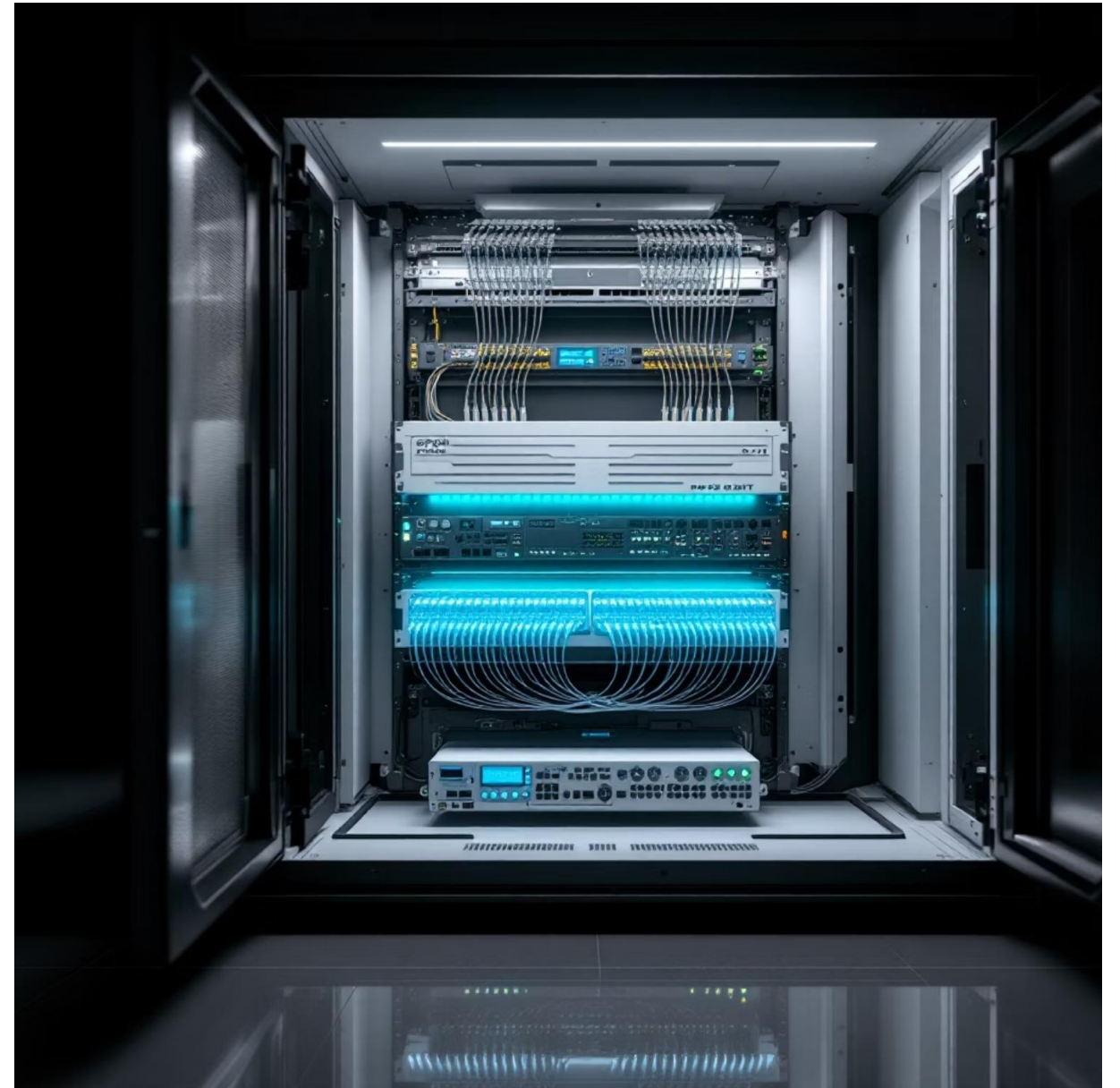


Delivers downstream speeds up to 2.5 Gbps and upstream speeds up to 1.25 Gbps over a single fiber, serving up to 64 endpoints per splitter.

XGSPON



Provides symmetrical 10 Gbps bandwidth in both directions, supporting next-generation applications while maintaining backward compatibility.



Our comprehensive GPON/XGSPON portfolio includes Optical Line Terminals (OLTs), Optical Network Terminals (ONTs), splitters, and management software for **complete end-to-end solutions.**



Design

Custom network architecture tailored to population density, geography, and existing infrastructure, with detailed mapping and optimization.

1

Connection

Precise fiber splicing and termination at premises, with professional installation of customer premises equipment (CPE).

2

3

Bringing Fiber to Every Home

Deployment

Specialized teams using advanced techniques like micro-trenching and aerial installation to minimize disruption while maximizing coverage.

Management

Sophisticated monitoring systems providing real-time visibility into network performance and enabling proactive maintenance.

Our FTTH solutions deliver **future-proof connectivity** with bandwidth capabilities exceeding 10 Gbps, supporting applications from basic internet access to 8K video streaming, smart home integration, and emerging technologies like **AR/VR**.



The Intelligence Behind Connectivity

Our active network equipment portfolio delivers the processing power and intelligence required for modern networks. From core to edge, our solutions ensure reliable, secure, and high-performance connectivity.

Core Routing & Switching

- High-capacity backbone equipment
- Software-defined networking (SDN) capabilities
- Advanced QoS and traffic management

Access & Edge Solutions

- Enterprise-grade WiFi access points
- PoE+ switches for converged networks
- Specialized industrial networking equipment

All our active equipment supports **comprehensive network management** through intuitive platforms that simplify configuration, monitoring, and troubleshooting.



The Foundation of Connectivity



Structured Cabling Systems

Our structured cabling solutions include Cat6A/Cat7/Cat8 copper and OM4/OM5/OS2 fiber options, supporting 10G, 40G, and 100G+ network speeds. Each installation includes comprehensive testing and certification.



Racks & Enclosures

From full-height data center racks to wall-mount cabinets, our enclosures provide secure housing for equipment with integrated power distribution, cooling, and cable management features.



Passive Optical Components

Our portfolio includes fiber patch panels, splice closures, distribution boxes, and field-terminated connectors designed for quick deployment and long-term reliability in various environments.

Specialized Communication Solutions & Smart City Solutions



Industrial Telephone Systems



SOS Emergency Points



Smart Poles



Elegant Smart Poles



We provide all versatile and advanced solutions needed to improve premises' communications and security varying from single building to a city applying modern smart city solution.

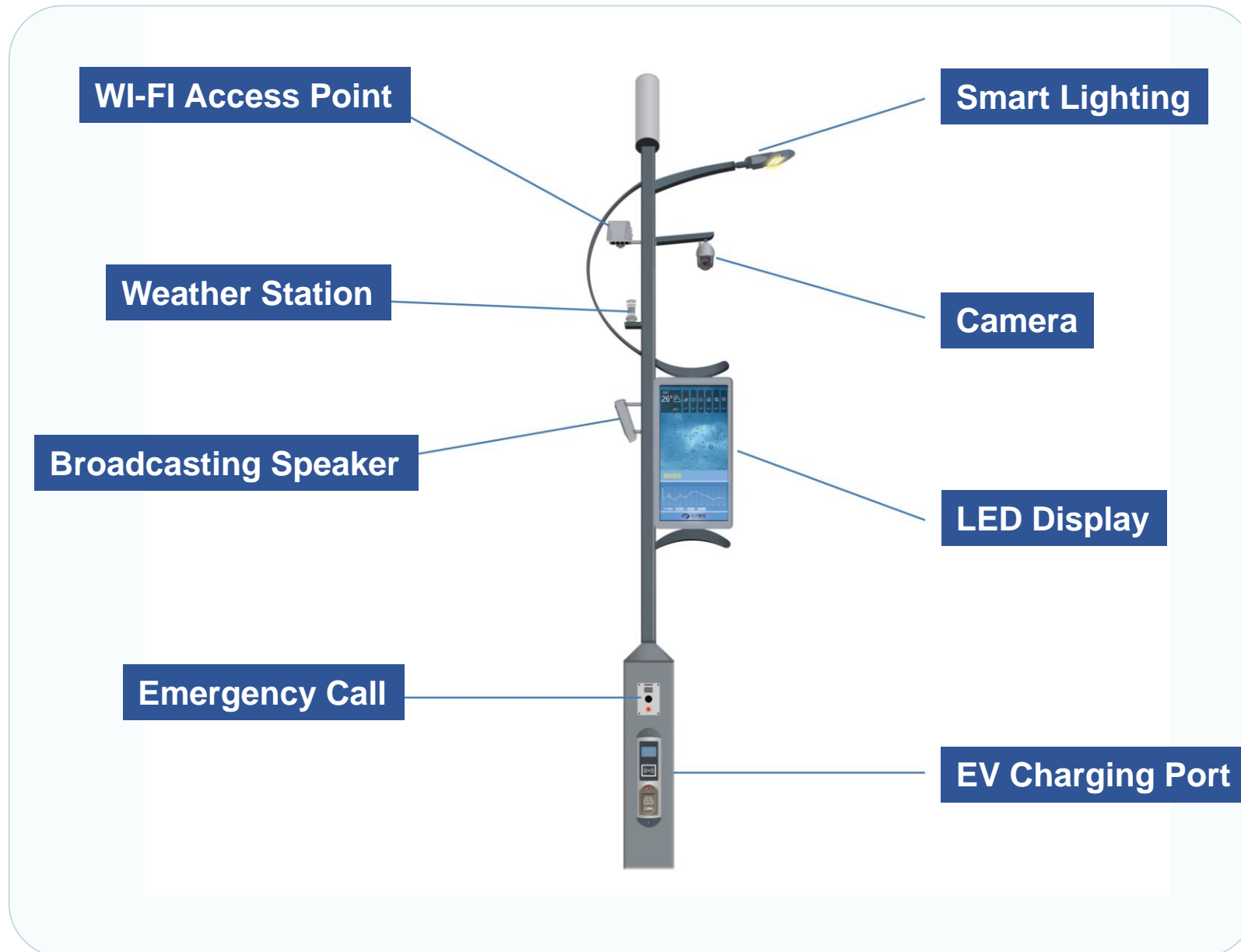
All our products can communicate using GSM/4G/5G networks eliminating the need to construct data network infrastructure so can be used in remote sites and provide fast easy deployment.

We provide EX Solutions

Smart Poles



Smart poles play a vital role as the essential infrastructure of smart cities and are also an important part of the 5G network construction. As a new generation of information infrastructure, it integrated multiple functions such as cameras, advertising screens, charging piles, mini base stations, etc., which can collect, transmit and release data on lighting, security, municipal administration, meteorology, environmental protection, communication, etc.



The Management Platform interface is shown in several screenshots, displaying various data and controls for the smart pole (ID: 7610355):

- Overview**: Shows a central dashboard with icons for Lighting (0%), Sensor (Temperature: 20 °C, Air quality index: 40Superior), Video, Charging (Connected/Unknown), and Screen.
- Lamp**: Displays lighting control options and status.
- Charging**: Shows charging station status and details.
- Camera**: Displays video monitoring feeds.
- Screen**: Shows information release content.
- Sensor**: Displays environmental monitoring data.

The Management Platform includes geographic information systems (GIS), street light control systems, environmental monitoring systems, alarm systems, energy monitoring systems, video monitoring systems, charging pile management systems, information release systems, asset management systems, project management systems, etc.,



Protecting Your Digital Assets

01

Perimeter Protection

Next-generation firewalls and secure gateways that provide deep packet inspection, application control, and threat prevention at network boundaries.

03

Endpoint Security

Hardware-based security modules for workstations and mobile devices that provide encryption, secure boot, and tamper detection capabilities.

Our security solutions are designed to work together as an integrated system, providing **defense in depth** to protect against both external threats and insider risks while maintaining compliance with industry standards and regulations.

02

Identity & Access Management

Multi-factor authentication appliances, biometric access systems, and physical security tokens that ensure only authorized users can access sensitive resources.

04

Monitoring & Response

Network traffic analyzers and security information management appliances that provide real-time visibility into threats and automated response capabilities.

Security Systems

Unity

milestone | XProtect[®]
Corporate

TCH
GROUP | SIQURA[®]

HID

 BOSCH

alhua
TECHNOLOGY

HIKVISION

JideTech[®]

UNV

Safety Systems

Simplex

 BOSCH

EATON

Kidde
Fire Systems

Kentec
Electronics Ltd

Nurse Call - Service Call - Intercom

itC

MINGKE

INTERCALL[®]
NURSECALL SYSTEMS

alhua
TECHNOLOGY

HIKVISION

Network Systems – Computers - Servers



MATV – IPTV – Audio Video- Public Address – LED Screen – Interactive Display

