



**CPSN**

**CONSTRUCTION & PLANNING FOR  
SECURITY SYSTEMS AND NETWORKS**

**Advanced Engineering Integrated Solutions**

**[www.conplanssn.com](http://www.conplanssn.com)**

# Company Overview



## **Construction & Planning for** *Security Systems and Networks*

is a major engineering systems integrator based in Jeddah, KSA, providing advanced and outstanding solutions. The company is committed to superior technology, best practices, and exceptional client outcomes





## Enabling Superior Revenues

### **Best-in-Class Technology**

Implementing cutting-edge security and network solutions

### **Domain Expertise**

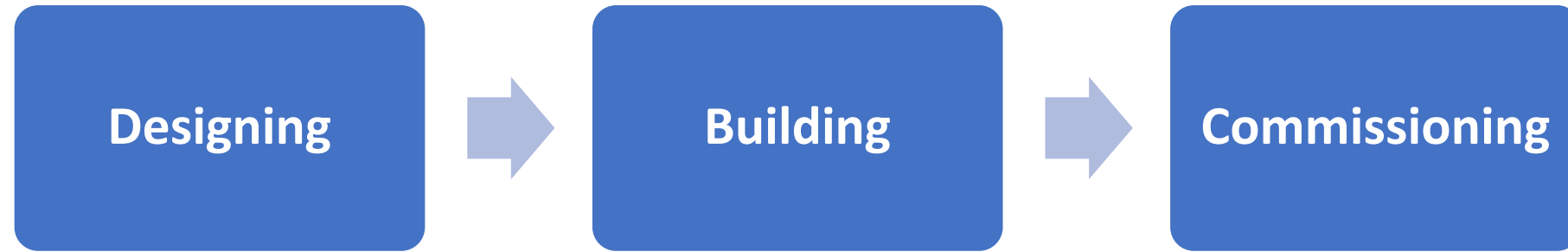
Leveraging specialized knowledge in systems integration

### **Global Standards**

Adhering to international best practices and certifications



## Design & Build



### Low Current Project Execution

Complete implementation of security and network systems



### Consultant Services

Expert guidance on system selection and implementation



### Maintenance & Support

Ongoing service and after-sales assistance

# Integrated Security Systems



## Access Control

Secure entry management for facilities

## Surveillance

Advanced monitoring solutions

## Industrial Intercom

Security Access Call points

## Hotel Locks

Specialized security for hospitality

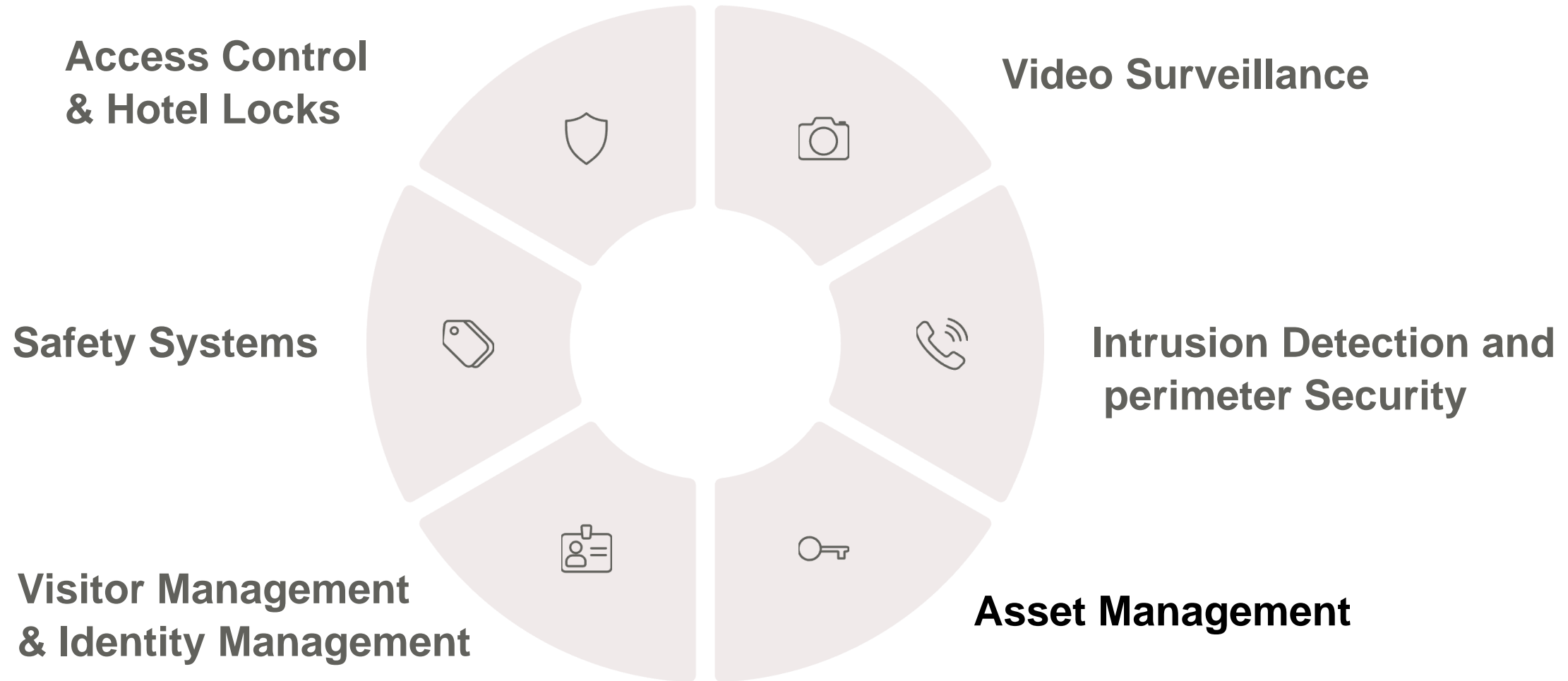
## Visitor Management

Track and control facility access

## RFID Inventory

Asset tracking and management

# Our Security Ecosystem



**Our integrated security solutions work together seamlessly to create a comprehensive protection strategy.**

# Access Control Systems



**Modern access control systems provide secure entry management for facilities of all sizes. These systems allow you to:**

- Control who enters specific areas
- Track entry and exit times
- Quickly grant or revoke access privileges
- Integrate with other security systems



# Advanced Surveillance Solutions



## Normal & Specialty Cameras

We have the know how of all types of standard and special surveillance projects.

## AI-Powered Analytics

Intelligent detection of suspicious behavior, abandoned objects, and unauthorized access attempts.

## Remote Monitoring

Access live and recorded footage from anywhere via secure mobile and desktop applications.





## Rugged Communication Solutions

Our industrial intercom systems are designed for harsh environments where clear communication is critical:

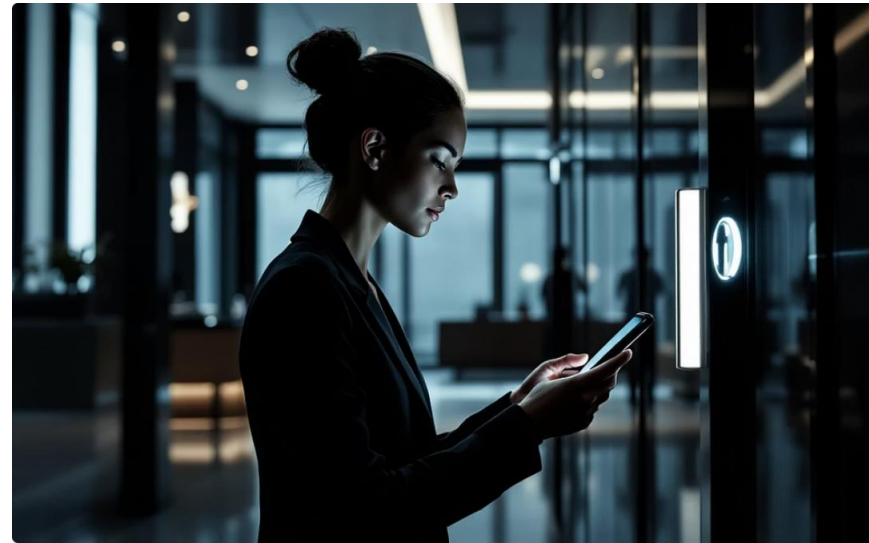
- Noise-canceling technology for clear audio in loud settings
- Weatherproof and dust-resistant construction
- Integration with access control for entry management
- Emergency broadcast capabilities

# Hotel Lock Systems



## RFID Keycard Locks

Secure, programmable locks that work with keycards, fobs, or mobile credentials.



## Mobile Access

Allow guests to use their smartphones as room keys for a contactless experience.



## Management Software

Centralized control system for managing all locks, access rights, and audit trails.



## Visitor Management

- Digital check-in and badge printing
- Pre-registration for expected guests
- Automatic host notifications
- Visitor history and reporting

## Asset Management

- Real-time asset location tracking
- Check-in/check-out procedures
- Maintenance scheduling
- Theft prevention alerts

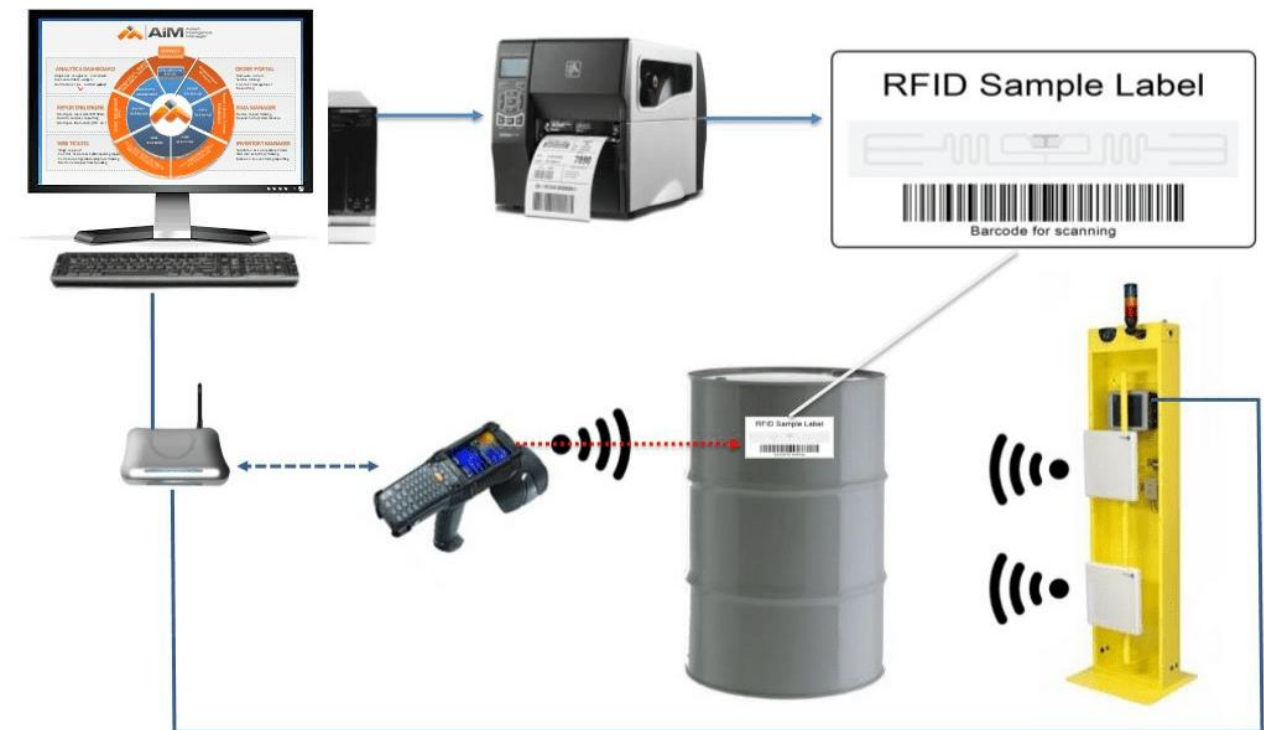
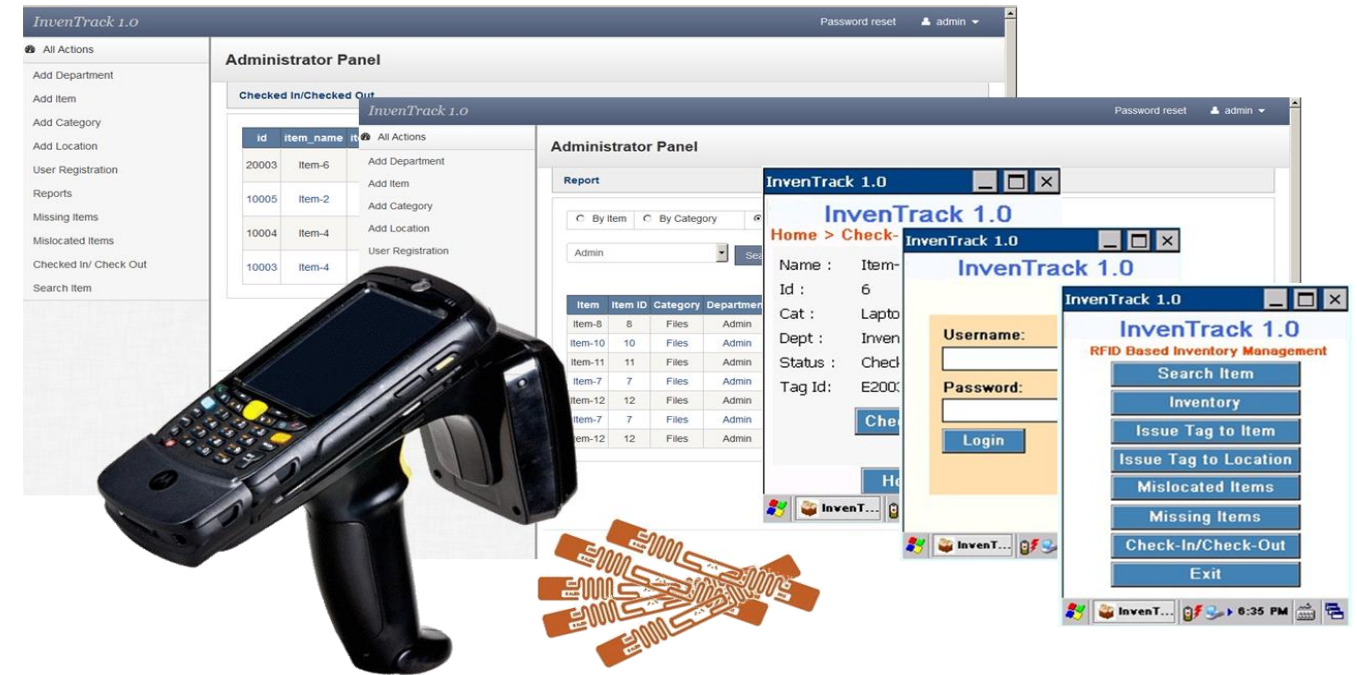


# RFID Inventory Management



## RFID technology revolutionizes inventory tracking with:

- Automated scanning without line-of-sight requirements
- Simultaneous reading of multiple tags
- Real-time inventory updates
- Theft prevention through exit monitoring
- Integration with security systems



# Voice & Data Systems



Welcome to our complete portfolio of telecommunications and networking solutions. We provide cutting-edge infrastructure components that form the backbone of modern digital communications, from voice systems to advanced security hardware. Our solutions are designed for reliability, scalability, and seamless integration into your existing network architecture.

- **IP/Digital/Analog Voice Exchange**
- **Data Centers**
- **GPON/XGSPON Systems**
- **FTTH Networks**
- **Active Network Equipment**
- **Passive Network Equipment - Structured Cabling**
- **Industrial Telephone**
- **SOS Points**
- **IT Security Hardware**



# IP/Digital/Analog Voice Exchange Systems



## Modern Communication Backbone

Our voice exchange systems serve as the central hub for all communications, seamlessly integrating traditional analog voice with advanced digital and IP-based technologies. We offer flexible deployment options including on-premises, cloud-based, and hybrid solutions to meet diverse organizational needs while ensuring compatibility with existing infrastructure.

### Key Features

- Unified communications across platforms
- Scalable from small offices to enterprise deployments
- 99.999% uptime reliability guarantee
- Advanced call routing and management





## The Foundation of Digital Infrastructure

### Design & Construction

We deliver turnkey data center solutions from initial design through construction and commissioning. Our facilities incorporate redundant power systems, advanced cooling, and optimized layouts to maximize efficiency and reliability.

### Management & Monitoring

Our DCIM (Data Center Infrastructure Management) solutions provide real-time insights into performance metrics, energy usage, and equipment health, enabling proactive maintenance and optimization.

### Colocation Services

For organizations seeking flexibility without capital investment, our colocation services offer secure rack space, power, cooling, and connectivity in our purpose-built facilities with 24/7 support and security.

Our data centers are designed to meet Tier III/IV standards with **99.999% uptime guarantees** and compliance with ISO 27001, SSAE 18, and regional regulatory requirements.



## Next-Generation Optical Networks

Gigabit Passive Optical Network (GPON) and 10-Gigabit Symmetric Passive Optical Network (XGSPON) technologies form the foundation of high-speed fiber networks, delivering exceptional bandwidth and reliability.

### GPON

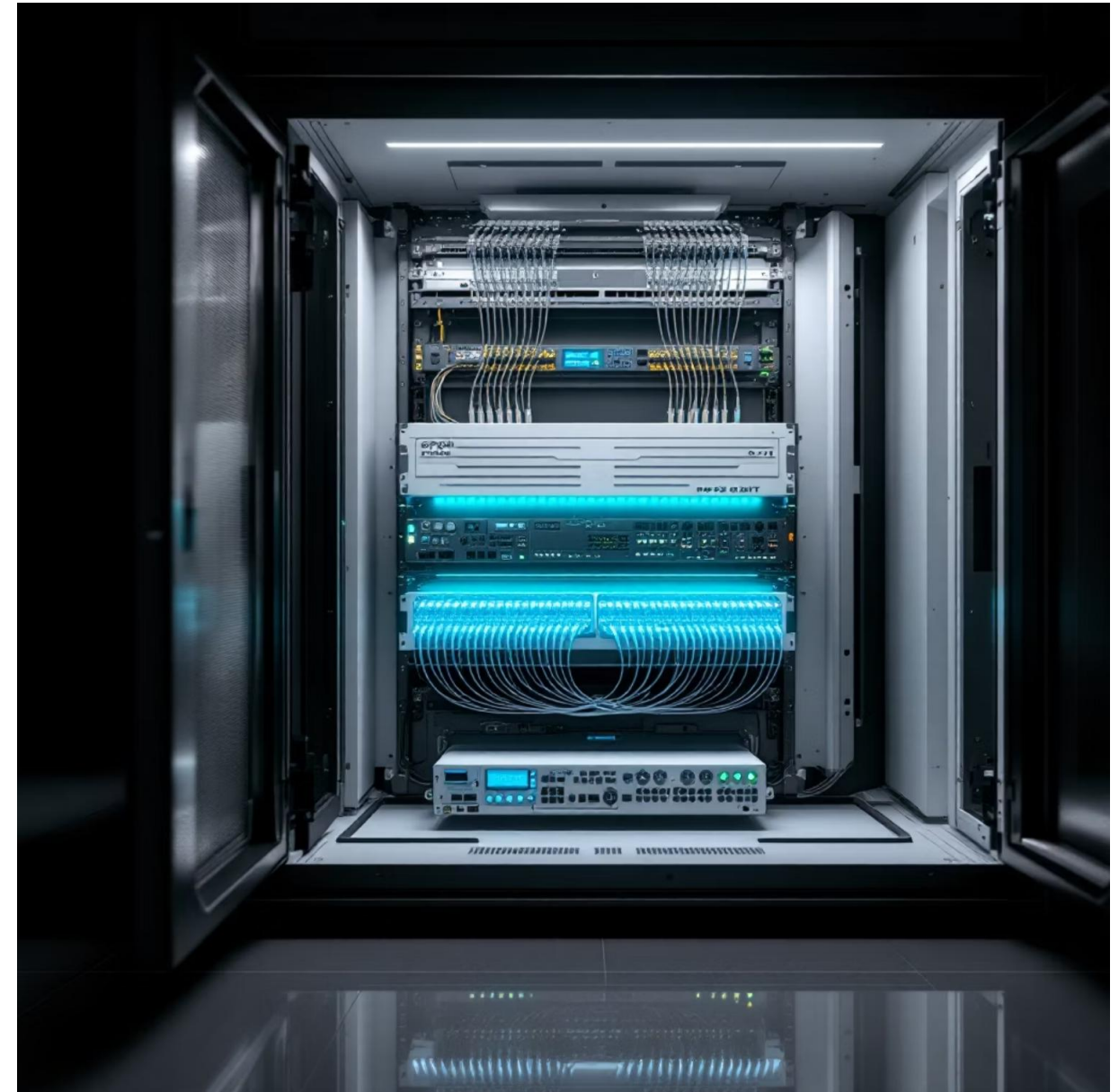


Delivers downstream speeds up to 2.5 Gbps and upstream speeds up to 1.25 Gbps over a single fiber, serving up to 64 endpoints per splitter.

### XGSPON



Provides symmetrical 10 Gbps bandwidth in both directions, supporting next-generation applications while maintaining backward compatibility.



Our comprehensive GPON/XGSPON portfolio includes Optical Line Terminals (OLTs), Optical Network Terminals (ONTs), splitters, and management software for **complete end-to-end solutions.**



## Design

Custom network architecture tailored to population density, geography, and existing infrastructure, with detailed mapping and optimization.

1

## Connection

Precise fiber splicing and termination at premises, with professional installation of customer premises equipment (CPE).

2

3

## Bringing Fiber to Every Home

4

## Deployment

Specialized teams using advanced techniques like micro-trenching and aerial installation to minimize disruption while maximizing coverage.

## Management

Sophisticated monitoring systems providing real-time visibility into network performance and enabling proactive maintenance.

Our FTTH solutions deliver **future-proof connectivity** with bandwidth capabilities exceeding 10 Gbps, supporting applications from basic internet access to 8K video streaming, smart home integration, and emerging technologies like **AR/VR**.



## The Intelligence Behind Connectivity

Our active network equipment portfolio delivers the processing power and intelligence required for modern networks. From core to edge, our solutions ensure reliable, secure, and high-performance connectivity.

### Core Routing & Switching

- High-capacity backbone equipment
- Software-defined networking (SDN) capabilities
- Advanced QoS and traffic management

### Access & Edge Solutions

- Enterprise-grade WiFi access points
- PoE+ switches for converged networks
- Specialized industrial networking equipment

All our active equipment supports **comprehensive network management** through intuitive platforms that simplify configuration, monitoring, and troubleshooting.



## The Foundation of Connectivity



### Structured Cabling Systems

Our structured cabling solutions include Cat6A/Cat7/Cat8 copper and OM4/OM5/OS2 fiber options, supporting 10G, 40G, and 100G+ network speeds. Each installation includes comprehensive testing and certification.



### Racks & Enclosures

From full-height data center racks to wall-mount cabinets, our enclosures provide secure housing for equipment with integrated power distribution, cooling, and cable management features.



### Passive Optical Components

Our portfolio includes fiber patch panels, splice closures, distribution boxes, and field-terminated connectors designed for quick deployment and long-term reliability in various environments.

# Specialized Communication Solutions & Smart City Solutions



## Industrial Telephone Systems



## SOS Emergency Points



## Smart Poles



## Elegant Smart Poles



We provide all versatile and advanced solutions needed to improve premises' communications and security varying from single building to a city applying modern smart city solution.

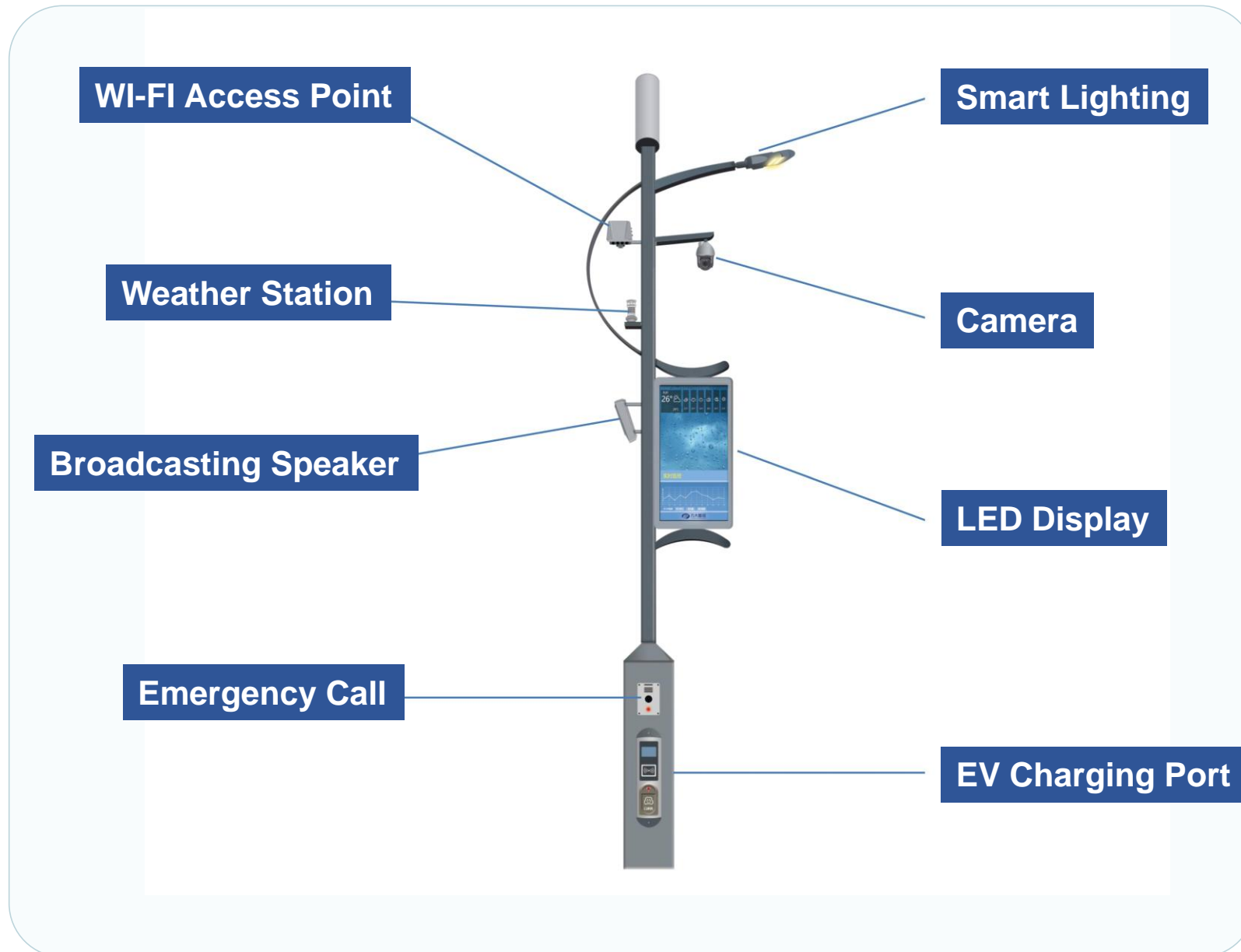
All our products can communicate using GSM/4G/5G networks eliminating the need to construct data network infrastructure so can be used in remote sites and provide fast easy deployment.

**We provide EX Solutions**

# Smart Poles



Smart poles play a vital role as the essential infrastructure of smart cities and are also an important part of the 5G network construction. As a new generation of information infrastructure, it integrated multiple functions such as cameras, advertising screens, charging piles, mini base stations, etc., which can collect, transmit and release data on lighting, security, municipal administration, meteorology, environmental protection, communication, etc.



The Management Platform interface is shown in several screenshots, displaying various data and controls for the smart pole. The interface includes:

- Overview**: A central dashboard showing the pole's status, including lighting, sensor data (Temperature: 20 °C, Air quality index: 40Superior), video monitoring, and charging status (Connected/Unknown).
- Lamp**: A control panel for the smart lighting, showing a light bulb icon and a 0% status.
- Charging**: A control panel for the EV charging port, showing a charging pile icon and a status of "Connected/Unknown".
- Camera**: A control panel for the camera, showing a camera icon and a "Video" status.
- Screen**: A control panel for the LED display, showing a screen icon and a "Screen" status.
- Sensor**: A control panel for the weather station, showing a sensor icon and "Sensor" data.

The Management Platform includes geographic information systems (GIS), street light control systems, environmental monitoring systems, alarm systems, energy monitoring systems, video monitoring systems, charging pile management systems, information release systems, asset management systems, project management systems, etc.,



## Protecting Your Digital Assets

01

---

### Perimeter Protection

Next-generation firewalls and secure gateways that provide deep packet inspection, application control, and threat prevention at network boundaries.

03

---

### Endpoint Security

Hardware-based security modules for workstations and mobile devices that provide encryption, secure boot, and tamper detection capabilities.

Our security solutions are designed to work together as an integrated system, providing **defense in depth** to protect against both external threats and insider risks while maintaining compliance with industry standards and regulations.

02

---

### Identity & Access Management

Multi-factor authentication appliances, biometric access systems, and physical security tokens that ensure only authorized users can access sensitive resources.

04

---

### Monitoring & Response

Network traffic analyzers and security information management appliances that provide real-time visibility into threats and automated response capabilities.



## Fire Alarm

Early detection systems for fire prevention



## Fire Suppression & Fighting

Advanced systems to contain and extinguish fires



## Voice Evacuation

Clear communication systems for emergency situations

# Fire Alarm



Starting from the design ending with implementation & commissioning, we provide all the fire detection solution for all kinds of projects: residential, commercial, industrial, marine, oil & Gas, etc.

**Our Systems include wireless reliable solutions.**



Our professional solutions incorporate unlimited varieties of management and integration that suite modern buildings recommendations.



# Fire Suppression & Fighting



## Automatic Gas Extinguishing

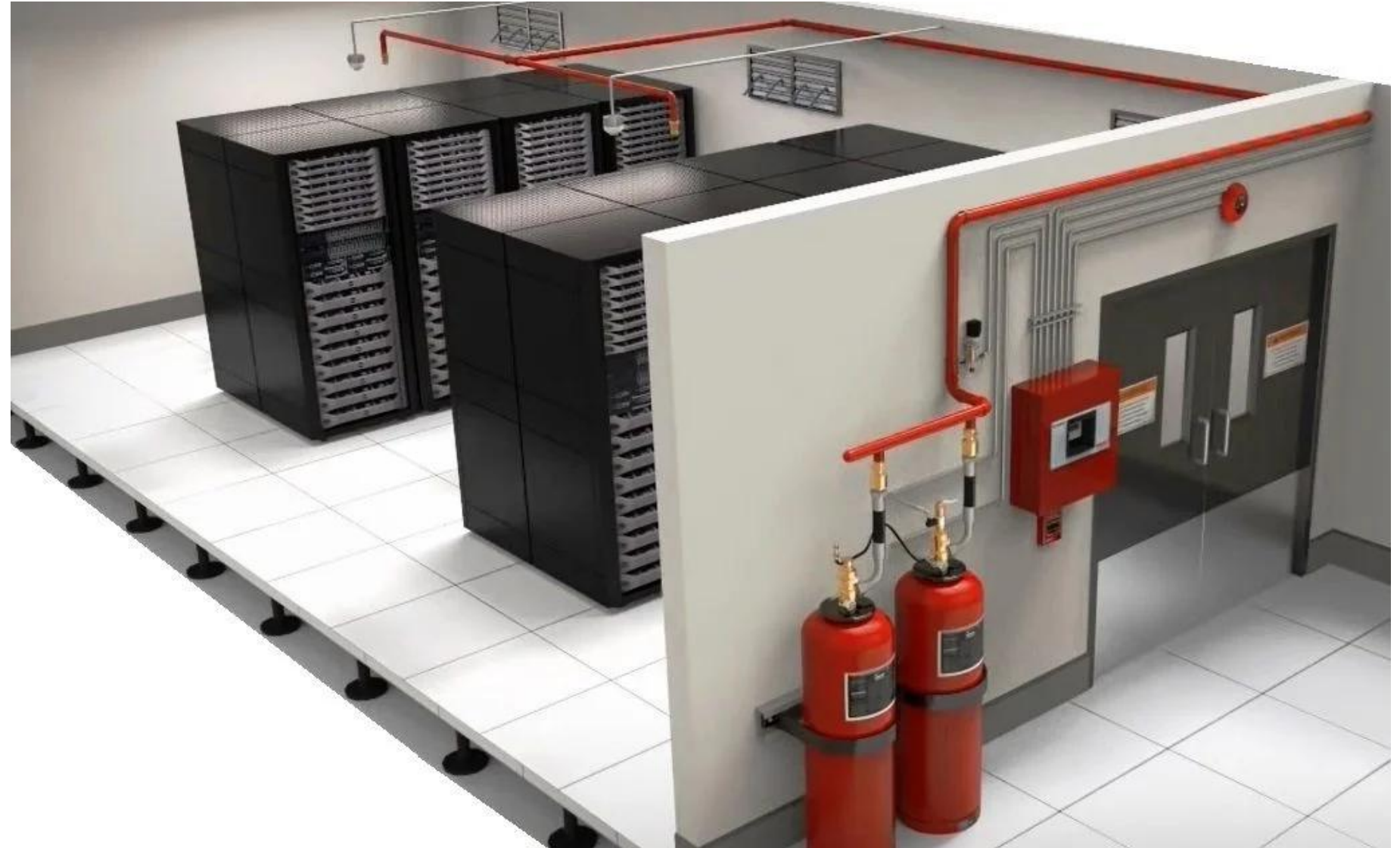
- FM200
- CO<sub>2</sub>
- Novec
- Aerosol
- Kitchen Hood Systems
- Fire Trace

## Water Based Fire Fighting

- Sprinkler System
- Dilution System
- Foam System
- Bladder Tanks
- Pumps

## Portable Extinguisher

- CO<sub>2</sub>
- Powder



# Voice Evacuation

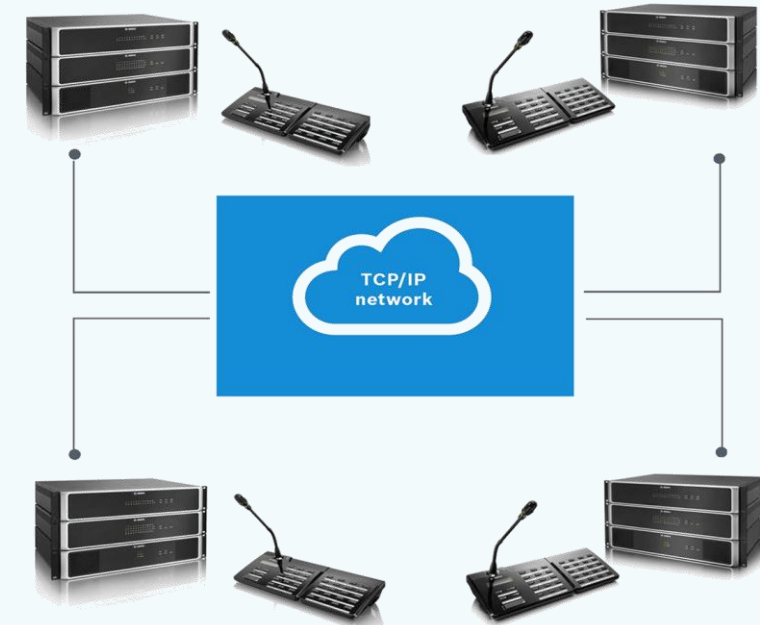


Professional Voice Evacuation portfolio includes systems either of European or UL standards

## European Standards

**Works as public address and turn to voice evacuation if emergency situation triggered.**

- Public Address + Voice Evacuation.
- Integrates with fire alarm using I/O modules or BACnet protocol over Ethernet.
- Backup hot standby amplifiers.
- 100V/70V Speaker Lines.
- Full monitoring for lines and amplifiers.



## UL Standard

**Works as voice evacuation only.**

- Dedicated Voice Evacuation controlled amplifiers.
- Extension panels of same installed fire alarm system.
- Monitored by Fire Alarm Control Panel.
- 25V Speaker Lines.
- Large Speakers varieties and usually combined with Fire Alarm notification appliances like strobes.
- Graphically controlled by Fire Alarm Graphics software.

# Service & Audio Video Systems



## Service Systems

- Nurse Call
- Parking Management
- Queuing & Calling Systems

## Audio Video

- Public Address & Professional Audio
- Conference Systems
- MATV & IPTV
- Indoor and Outdoor LED Screens
- Interactive Display





## IP Nurse Call Solutions

- Fully Addressable.
- Link between Patients, Nurses and Doctors
- Manage patients schedules.
- Notify Nurses and Doctors with tacks on time.
- Provide intercom features between Medical Staff.
- Full reporting engine.
- Redundant platform.
- Outpatients management and queuing.
- 24/7 Performance monitoring.

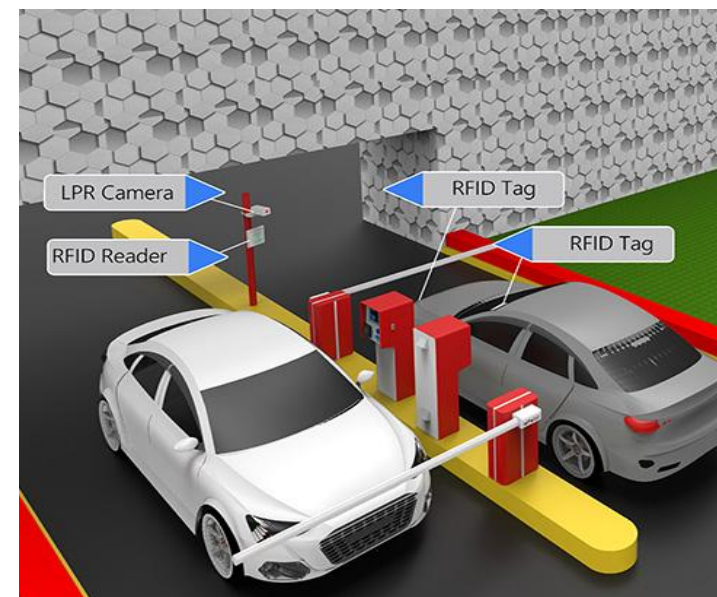


# Parking Management



## Advanced Parking Management Solutions for Commercial Buildings, Residential Buildings, Service Areas, etc.

- Ticketing system or card controlled.
- Parking Sensors IP & wireless.
- User screen guide.
- License plate tracking.
- License plate recognition as access control.
- License plate black list.
- Self service booth for payment.
- Multi card readers technologies.
- Long range RFID readers.
- Advanced ticket dispensers with card readers built in.
- Reporting system and dashboard.
- Under Vehicle Surveillance.
- Mobile client (according to manufacturer).
- Full integration with integrated security platforms (according to manufacturer)



# Public Address, Professional Audio & Audio Video



Whether the inquiry is Public Address, Professional Audio or Audio-Video we have the premium solutions that satisfy our customers.

- IP & Analog Public Address solutions.
- Professional Audio systems.
- Audio Video Solutions.
- Zonal Systems.
- Management Software.
- All indoor/outdoor speakers types.
- Monitoring of Speakers Lines & Amplifiers.
- Unlimited Amplification power.
- Expandable systems with no limits.
- Media players.
- LED Screens



# Conference Systems



## We provide all conferencing solutions

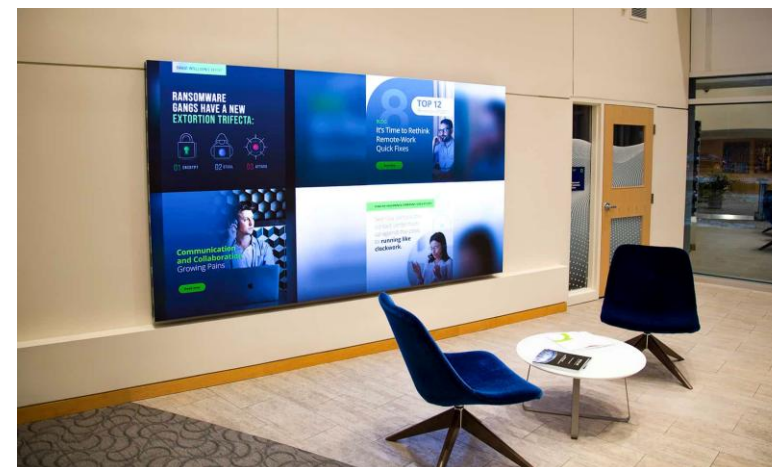
- Stand alone conference systems.
- PABX based conference calls.
- Video conference system.
- Conference media players.
- Share and distribution of media files.
- poly cast communication.
- Conference recording.
- Android, Microsoft & android based systems.
- Support technologies like **AR/VR**.
- Reports and dashboards for PABX based systems.



# MATV & IPTV



- Analogue Satellite Channels Distribution
- Interactive IP-TV Solutions
- Residential and commercial solutions
- Hospitality Solutions
- Hotel Information Systems.
- VOD (video on demand)
- Decoding channels.
- Set top box.
- Media players.
- Media extenders.
- Fiber Optics networks for media distribution.
- Network professional equipment.
- Billing systems for hotels and resorts.
- Digital Signage



# Indoor LED Screens



Rental for Events

Rental for Exhibitions

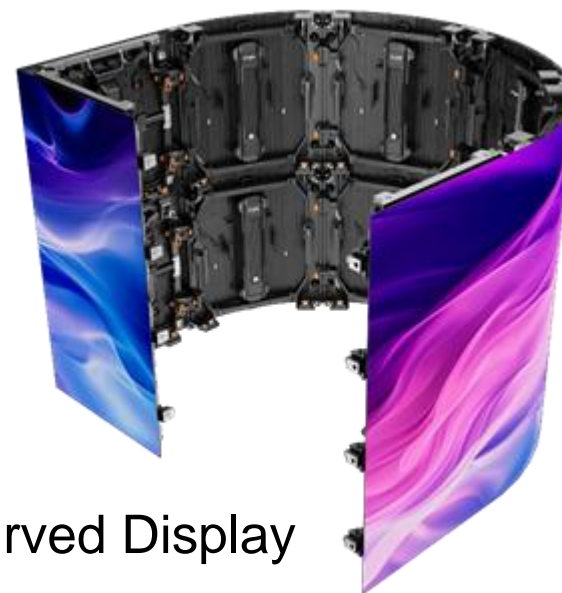


Command & Control Center

Commercial



**Tailored LED screen  
whatever the size or area,  
whatever the shape you  
will find your request.**



Curved Display



Cube Display



Floor Display

# Indoor LED Screens



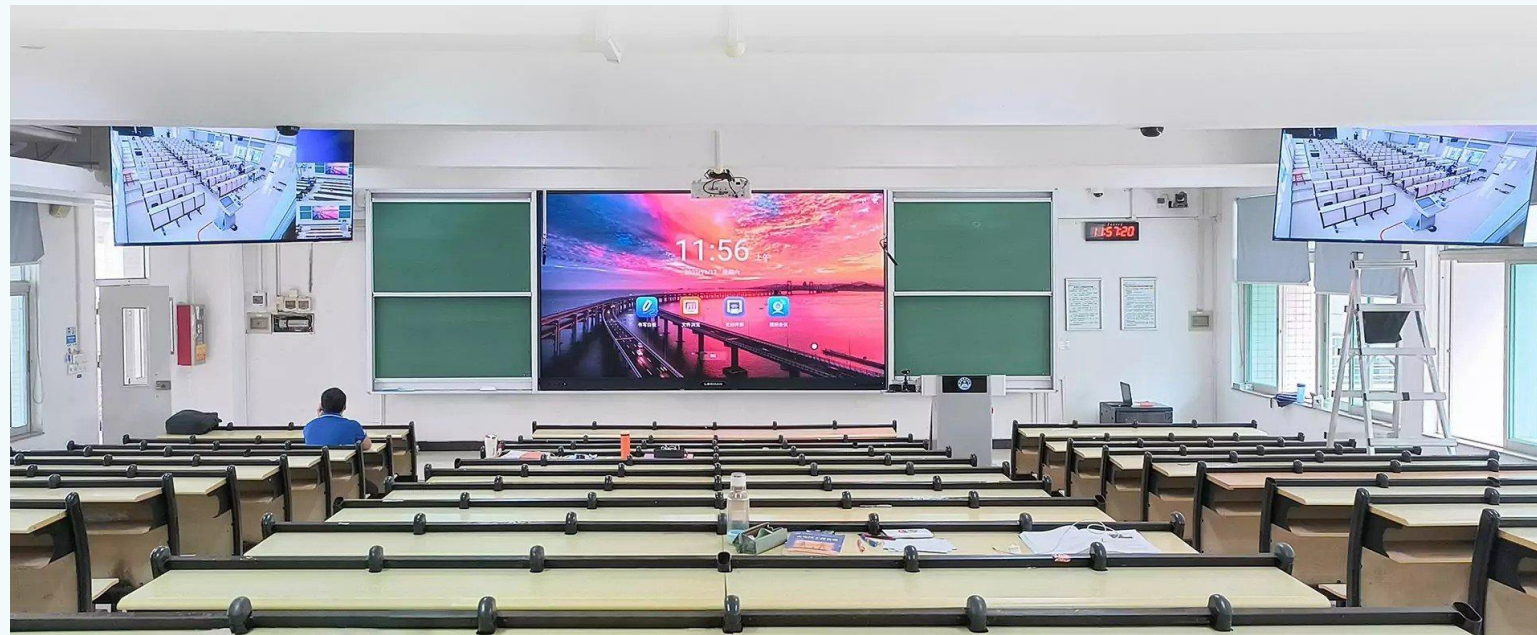
- Turn your building or any wide seen area to advertising screen,
- LED screen can be a modern decorative finish for buildings and advertising project at same time.
- Great revenue for commercial investments.
- Replace any glass area with transparent LED screens and turn it to usable display.
- Digital Signage.
- Dashboard and Schedules applications.
- Educational Applications.
- Carnivals and Events Rental easy to assemble and dismantle after event end.
- Multi input sources and media share options.



# Educational and Business Solutions



Leverage your business and meeting rooms with interactive displays, these displays replaced projectors and provided new levels for business reliability and meeting's value. Start your new business level with our solutions.



Modern Education organization enhance education methods by using LED screens in lecture rooms, due to reliability in size selection, media presenting, mirroring of computers and mobile phones, combine many class rooms to same lecture, and more than this can be achieved when use LED screen instead of white boards and projectors.



# Technology Players

Following brands are been installed by us in our projects, we have the knowhow to design and implement these systems.

## Security Systems

Unity

milestone | XProtect<sup>®</sup>  
Corporate

TCH  
GROUP | SIQURA<sup>®</sup>

HID

 BOSCH

*alhua*  
TECHNOLOGY

HIKVISION

JideTech<sup>®</sup>


UNV

## Safety Systems

 Simplex

 BOSCH

EATON

 Kidde  
Fire Systems

 Kentec  
Electronics Ltd

## Nurse Call - Service Call - Intercom

itC

MINGKE

INTERCALL<sup>®</sup>  
NURSECALL SYSTEMS

*alhua*  
TECHNOLOGY

HIKVISION

# Network Systems – Computers - Servers



# MATV – IPTV – Audio Video- Public Address – LED Screen – Interactive Display



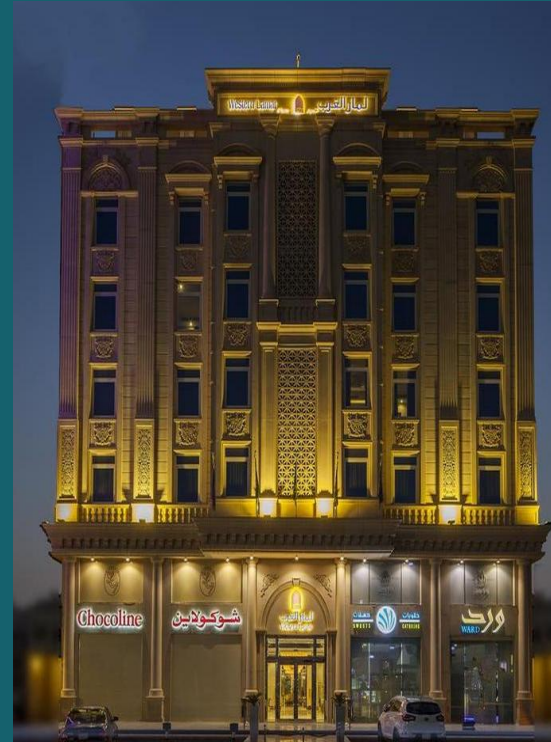


# Selected Reference Projects



Al-Telal Towers - Makkiyon

Location: Makkah



Western Lamar Hotel

Location: Jeddah



ASCOTT Hotel

Location: Jeddah



Malda Ladies Salon

Location: Jeddah



Al-Kawthar International School  
Location: Jeddah



Ruba Jeddah - Sakani Residential Complex  
Location: Jeddah



Jeddah Knowledge School  
Location: Jeddah



Al-Haditha International School  
Location: Yanbu



Bupa Arabia  
Location: Jeddah - Riyadh



Desert Home Resort  
Location: Jeddah



Obhor Residence 1&2  
Location: Jeddah



Nawara House For Fashion  
Location: Jeddah



Billar  
Location: Jeddah



Souq 7 – Bait Alarab  
Location: Asfan - Jeddah



Al Madina Printing & Publication Co.  
Location: Asfan Jeddah



Prince Mohammed Abdulaziz International Airport  
Location: Jeddah - Al Madina Al Munawara



## Construction and Planning for Security Systems and Networks

### Address

2827 Al-Rihab 142  
Al-Rehab District,  
Jeddah, KSA

### Contacts

Inquiry: sales@conplanssn.com  
Telephones: +966 55 304 7052

### Company Registration:

Registration number: 7032608858

VAT: 311580733900003

## بناء وتخطيط لأنظمة المراقبة والشبكات

### العنوان

2827 الرحاب 142  
حي الرحاب  
جدة، المملكة العربية السعودية

### التواصل

عروض الأسعار: sales@conplanssn.com  
الاتصالات: +966 55 304 7052

### تسجيل الشركة

الرقم الوطني الموحد: 7032608858  
رقم التسجيل الضريبي: 311580733900003



# شهادة السجل التجاري

مؤسسة بناء و تخطيط للأنظمة الامنية و  
الشبكات

البيانات الأساسية للسجل التجاري



7032608858

الرقم الوطني الموحد: 7032608858

تاريخ الإصدار: 06/08/2023

نوع الكيان: مؤسسة

حالة السجل: نشط



TIN 3115807339 الرقم المميز  
Certificate No. 100251148417253 رقم الشهادة  
Certificate date 03/08/2023 تاريخ الشهادة



هيئة الزكاة والضريبة والجمارك  
Zakat, Tax and Customs Authority

المملكة العربية السعودية  
Kingdom of Saudi Arabia

## شهادة تسجيل في ضريبة القيمة المضافة VAT Registration Certificate

تشهد هيئة الزكاة والضريبة والجمارك بأن المكلف أدناه مسجل في ضريبة القيمة المضافة بتاريخ ٠٣/٠٨/٢٠٢٣ م  
The Zakat, Tax and Customs Authority certifies that taxpayer below is VAT registered on 03/08/2023 AD

Taxpayer Name	مؤسسة بناء و تخطيط لأنظمة الامنية و الشبكات	اسم المكلف
VAT Registration Number	311580733900003	رقم التسجيل الضريبي
Effective Registration Date	2023/08/01	تاريخ نفاذ التسجيل
Taxpayer Address	جدة، جدة، 7827 - حي الرحاب، 23344	عنوان المكلف
CR / License Contact / ID No	7032608858	رقم السجل التجاري الرخصة / العقد / الهوية
Tax Period	ربع سنوي - Quarterly	الفترة الضريبية
First Filing due date	2023/10/31	تاريخ استحقاق أول إقرار ضريبي

**ملاحظة:** كمكلفين مسجلين في ضريبة القيمة المضافة، لا يجوز لكم تحصيل ضريبة القيمة المضافة من عملائكم قبل تاريخ نفاذ التسجيل في الضريبة. و في حال تبين غير ذلك ستقوم هيئة الزكاة والضريبة والجمارك بتنفيذ الغرامات المستحقة

**Note:** As a VAT registered taxpayer, you are not allowed to collect VAT from your customers prior to the effective date of the tax registration. If otherwise approved, The ZAKAT, Tax and Customs Authority will impose the applicable penalties





## **Superior Technology**

Access to cutting-edge security and network solutions

## **Expert Implementation**

Professional design, installation, and maintenance

## **Exceptional Outcomes**

Proven track record of successful projects across Saudi Arabia